

# CITY OF MOSIER - JOINT USE FACILITY CONCEPTUAL ESTIMATE SUMMARY



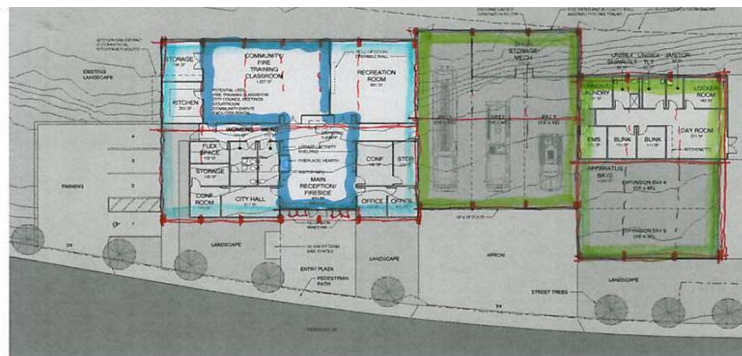
cs | construction

JUNE 2, 2017

	SITE SF	BUILDING 12,285	TOTAL
SITWORK - OFF SITE UTILITIES / STREET IMPROVEMENTS			\$0
SITWORK (ON-SITE) - GRADING / UTILITIES / PAVING	\$8.59	\$39.83	\$489,304
SITE RETAINING WALLS / IMPORT STRUCT. FILL	\$4.25	\$19.72	\$242,290
BUILDING SHELL - PRE ENGINEERED METAL BUILDING		\$107.00	\$1,314,495
INTERIOR FINISH - LEVEL #1 - UNFINISHED (6,860 SF)		\$12.50	\$85,750
INTERIOR FINISH - LEVEL #2 (2,720 SF)		\$105.00	\$296,100
INTERIOR FINISH - LEVEL #3 (2,705 SF)		\$70.00	\$189,350
<b>TOTAL ESTIMATED CONSTRUCTION COSTS</b>		<b>\$213.05</b>	<b>\$2,617,289</b>
ESCALATION ALLOWANCE (36 MONTHS)	10.5%		\$274,815
CONCEPTUAL ESTIMATE CONTINGENCY:	10%		\$289,210
<b>TOTAL CONCEPTUAL COST ESTIMATE</b>		<b>\$258.96</b>	<b>\$3,181,314</b>

## NOTES

- 1 THE BUDGET FOR IMPORTED STRUCTURAL FILL HAS BEEN REDUCED BY \$129,000 TO ACCOUNT FOR FILL MATERIAL TO BE SUPPLIED AND DELIVERED TO THE SITE BY ODOT. THIS ASSUMES THE MATERIAL IS AN ACCEPTABLE STRUCTURAL FILL.
- 2 THE BUDGET FOR THE BUILDING SHELL ASSUMES THE STRUCTURAL FRAMING AND ENVELOPE SYSTEM IS CONSTRUCTED UTILIZING A PRE-ENGINEERED METAL BUILDING SYSTEM AND STANDARD COMMERCIAL DOORS, WINDOWS AND MEP SYSTEMS.
- 3 THE INTERIOR FINISH BUDGETS ARE BASED ON THE FOLLOWING AREAS AS DEFINED BY HEA ARCHITECTS:



- LEVEL OF FINISH 1 (UNFINISHED)
- LEVEL OF FINISH 2 (GYP. CFT. ACT)
- LEVEL OF FINISH 3 (WD. CFT. ACOUST.)

**SUBMITTED BY:**  
**CS CONSTRUCTION (OR CCB #163443)**

**M. COHEN**

**DATE**

CS Construction

6/2/2017